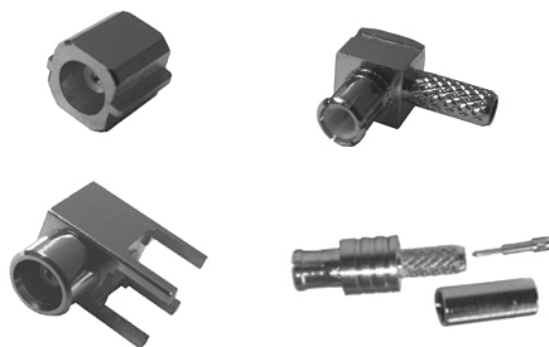


## MCX Series

MCX 小型插入自锁式连接器是按照 CECC22220 要求生产的体积，重量、耐用性及性能具佳的产品，其体积比标准的 SMB 小 30%，因而连接更紧密。适用于对体积、重量、性能及安装方式有特殊要求的领域。

The MCX series are snap-on coupling micro-miniature coaxial connectors which are developed according to the specifications of CECC22220. With the 30% smaller size than SMB connectors, they are sure to fit most applications where space, weight, performance and ease of assembly are required in RF circuits of communication instruments.

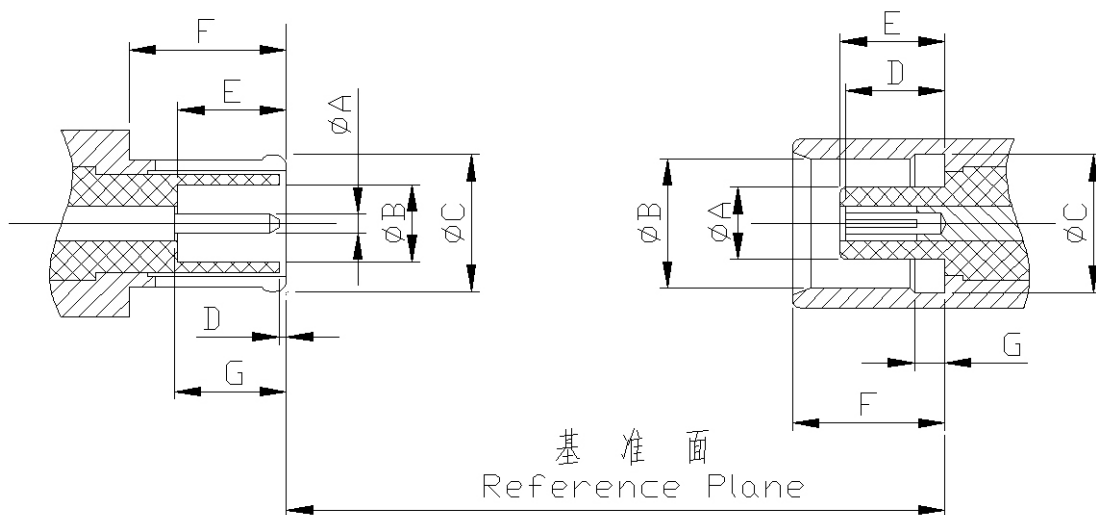


# 金润信电子科技有限公司

主要技术特性 Technical Characteristics:		
环境温度范围 Temperature range	-65~+165℃	
<b>电气性能 Electrical Characteristics</b>		
特征阻抗 Characteristic impedance	50Ω,75Ω	
工作电压 Working voltage	500V max(有效值)	
频率范围 Frequency range	0~6GHz(50Ω); 0~1.5GHz(75Ω)	
介质耐压 Dielectric withstanding voltage	海平面 at sea level: 750V(volts RMS)	
接触电阻 Contact resistance	内导体 center contact	≤5.0mΩ
	外导体 Outer contact	≤2.5mΩ
绝缘电阻 Insulation resistance	≥1000MΩ	
电压驻波比 VSWR	直式 straight	≤1.20(50Ω); ≤1.35(75Ω)
	弯式 right - angle	
<b>材料与涂覆 Mechanical Characteristics</b>		
壳体和其它金属零件 Body or other metallic parts	黄铜镀金 Brass, gold plated	
插针 Male center contacts:	黄铜镀金 Brass, gold plated	
插孔 Female center contacts:	铍青铜镀金 Beryllium copper, gold plated	
绝缘体 Insulators:	聚四氟乙烯 PTFE	
压接套 Crimp ferrules:	铜合金镀镍或镀金 Copper alloy, nickel or gold plated	
密封件 Sealing washer	硅橡胶 Silicone rubber	
连接器机械耐久性 Connector durability	500 次 Cycles	

## MCX Series

### 界面尺寸 Interface Mating Dimensions



	PLUG (mm)	
	MIN	MAX
A	0.48	0.53
B	2.00	2.07
C	3.68	3.76
D	0.00	0.30
E	2.81	3.20
F	4.15	-
G	2.81	3.20

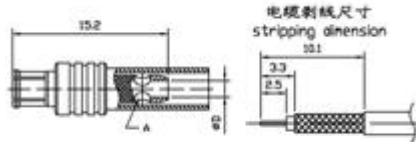
	JACK (mm)	
	MIN	MAX
A	1.80	1.97
B	3.43	3.48
C	3.61	3.75
D	2.31	2.79
E	2.61	2.79
F	4.00	4.12
G	0.75	0.85

## MCX Series

### 电 缆 连 接 器 Connectors for Cables



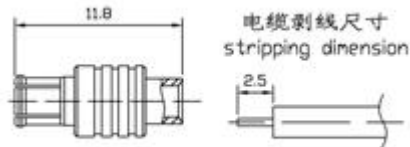
MCX-J2



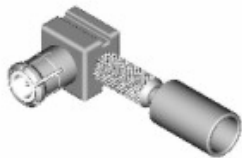
产品型号	电缆型号	D	备 注
MCX-J2	SFF-50-1 RG178/U	Ø1.0	A 处打 Ø1.5 焊线孔
MCX-J3	SFF-50-1.5-1 RG316/U	Ø1.65	A 处无焊线孔



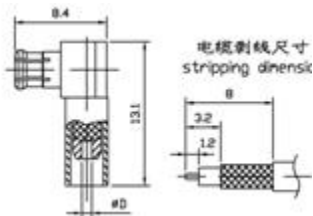
MCX-JB2



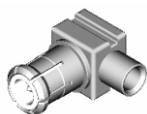
产品型号	电缆型号	D	备注
MCX-JB2	SFT-50-2-1 RG405/U	Ø2.2	
MCX-JB3	SFT-50-3-1 RG402/U	Ø3.6	



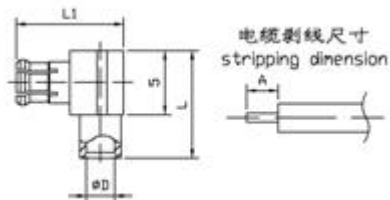
MCX-JW2



产品型号	电缆型号	D	备注
MCX-JW2	SFF-50-1 RG178/U	Ø0.9	
MCX-JW3	SFF-50-1.5-1 RG316/U	Ø1.6	



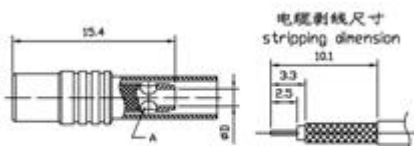
MCX-JWB2



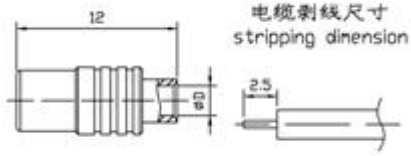
产品型号	电缆型号	D	L	L1	A
MCX-JWB2	SFT-50-2-1	Ø2.2	8.4	8.4	2.5
MCX-JWB3	SFT-50-3-1	Ø3.6	9.2	9.2	4.0



MCX-K2

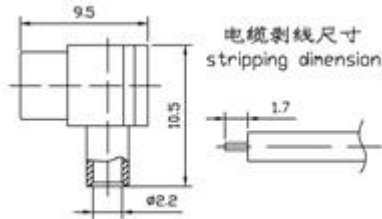
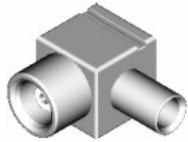


产品型号	电缆型号	D	备注
MCX-K2	SFF-50-1 RG178/U	Ø0.9	
MCX-K3	SFF-50-1.5-1 RG316/U	Ø1.6	



产品型号	电缆型号	D	备注
MCX-KB2	SFT-50-2-1 RG405/U	Ø2.2	
MCX-KB3	SFT-50-3-1 RG402/U	Ø3.6	

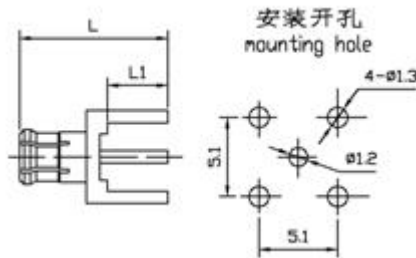
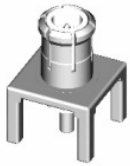
MCX-KB2



产品型号	电缆型号	备注
MCX-KWB2	SFT-50-2-1 RG405/U	

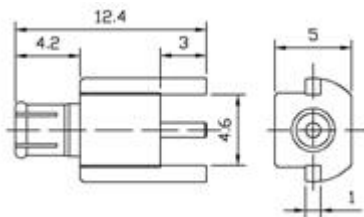
MCX-KWB2

印制板安装连接器  
Connectors for PC Board Mounting

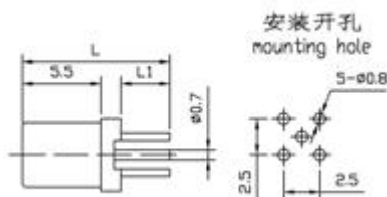
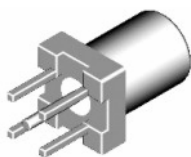


产品型号	L	L1	备注
MCX-JHD	9.6	3.9	
MCX-JHD1	8.6	2.9	
MCX-JHD2	7.8	2.3	

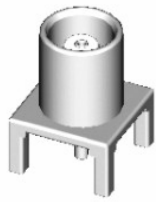
MCX-JHD



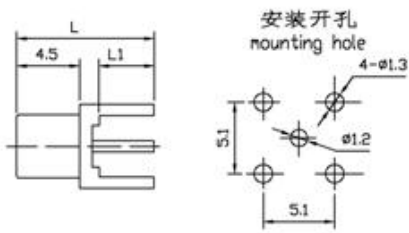
MCX-JH-PCB



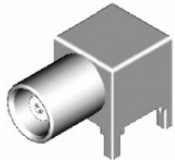
MCX-KHD9



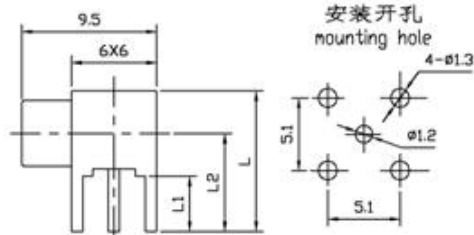
MCX-KHD



产品型号	L	L1	备注
MCX-KHD	8.3	2.4	
MCX-KHD1	9.3	3.4	
MCX-KHD2	7.1	1.2	
MCX-KHD3	11.3	3.9	
MCX-KHD4	10.1	3.5	
MCX-KHD7	8.6	2.6	
MCX-KHD10	12.5	2.7	

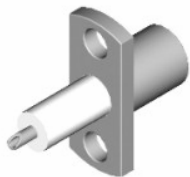


MCX-KWHD

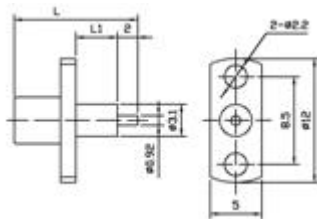


产品型号	L	L1	L2	备注
MCX-KWHD	7.7	1.7	4.7	
MCX-KWHD1	8.9	2.9	5.9	
MCX-KWHD2	9.9	3.9	6.9	

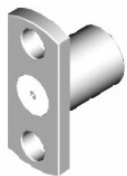
## 微带连接器 Micro-Strip Connectors



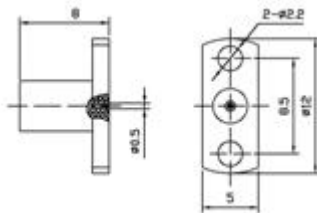
MCX-KFD



产品型号	L	L1	备注
MCX-KFD	10	2	
MCX-KFD1	12	4	
MCX-KFD2	16	8	



MCX-KF2

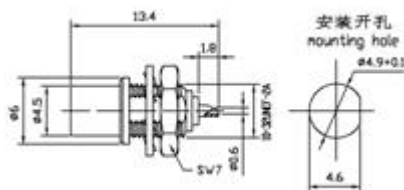


产品型号	备注
MCX-KF2	适配插针 $\varnothing 0.5^{+0.03}_{-0.02}$

## 面板连接器 Panel Connectors



MCX-KY



# 金润信电子科技有限公司