

## MC-CARD Series

MC-CARD 连接器是按照 IEC 286-3 标准生产的一种小型的快速插入、断开的同轴连接器。可以稳定工作在 $\leq 6\text{GHz}$ 的频率内。

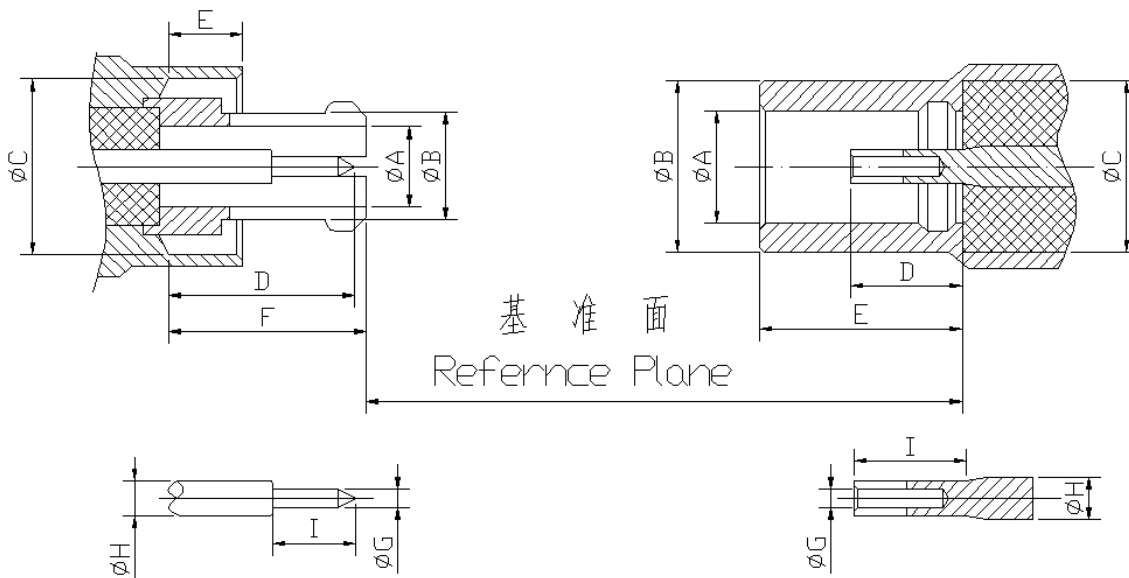
MC-CARD connectors are quick connection & disconnection snap on mating. It can be used from DC up to 6GHz or higher..



# 金润信电子科技有限公司

主要技术特性 Technical Characteristics:		
环境温度范围 Temperature range	-25~+125°C	
<b>电气性能 Electrical Characteristics</b>		
特征阻抗 Characteristic impedance	50Ω	
工作电压 Working voltage	100V max(有效值)	
频率范围 Frequency range	0~6GHz	
介质耐压 Dielectric withstanding voltage	海平面 at sea level: 250V(volts RMS)	
接触电阻 Contact resistance	内导体 center contact	≤5.0mΩ
	外导体 Outer contact	≤3.0mΩ
绝缘电阻 Insulation resistance	≥500MΩ	
电压驻波比 VSWR	≤1.40 at 2.5GHz	
<b>材料与涂覆 Mechanical Characteristics</b>		
壳体和其他金属零件 Body or other metallic parts	黄铜镀金或镀镍 Brass, gold or nickel plated 不锈钢, 钝化或镀金 stainless, steel passivity or gold plated	
插针 Male center contacts:	黄铜镀金 Brass, gold plated	
插孔 Female center contacts:	铍青铜镀金 Beryllium copper, gold plated	
绝缘体 Insulators:	聚四氟乙烯 PTFE	
密封件 Sealing washer	硅橡胶 Silicone rubber	
连接器机械耐久性 Connector durability	500 次 Cycles	

### 界面尺寸 Interface Mating Dimensions



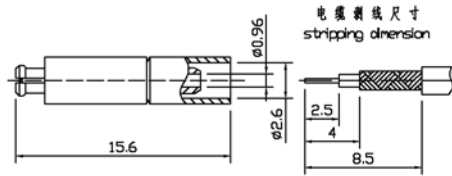
	PLUG (mm)	
	MIN	MAX
A	1.35	1.45
B	1.80	1.90
C	2.97	3.00
D	3.15	3.25
E	1.25	1.35
F	3.35	3.45
G	0.33	0.37
H	0.58	0.62
I	1.40	1.50

	JACK (mm)	
	MIN	MAX
A	1.90	2.00
B	2.90	2.96
C	2.90	2.96
D	1.50	1.70
E	3.20	3.40
G	0.33	0.43
H	0.70	0.80
I	3.20	3.40

## MC-CARD Series



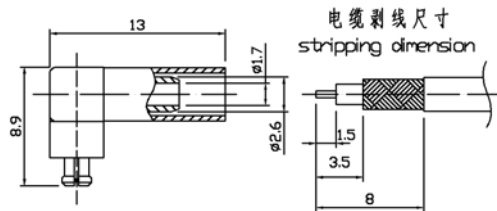
MC-CARD-J2



产品型号	电缆型号	备注
MC-CARD-J2	RG178	



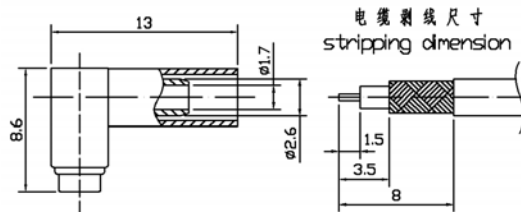
MC-CARD-JW3Y



产品型号	电缆型号	备注
MC-CARD-JW3Y	RG174/U	



MC-CARD-KW3Y



产品型号	电缆型号	备注
MC-CARD-KW3Y	RG178	



MC-CARD-KSD

