

L9 (DIN 1.6/5.6) Series

L9 (DIN1.6/5.6) 系列产品是按照 IEC169-13、DIN47295 生产的一种小型螺纹连接的同轴连接器，具有尺寸小、重量轻、机电性能具佳的特点。供通讯设备和无线电仪器的高频回路中连接射频同轴电缆用。

The L9 (DIN1.6/5.6) series are screw coupling miniature coaxial connectors, which are developed and manufactured according to the specifications of IEC169-13, CECC 22240 and DIN 47295. They have the characteristics of small size, high mechanical and electrical stability, and used in many types of communication equipments.

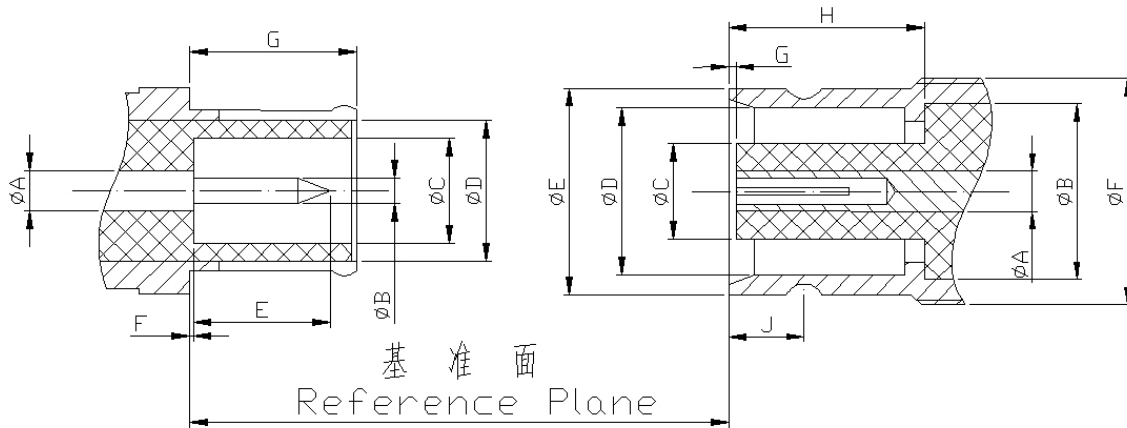


金润信电子科技有限公司

主要技术特性 Technical Characteristics:		
环境温度范围 Temperature range	-40~+85℃	
电气性能 Electrical Characteristics		
特征阻抗 Characteristic impedance	75Ω	
工作电压 Working voltage	330V max(有效值)	
频率范围 Frequency range	0~1GHz	
介质耐压 Dielectric withstanding voltage	海平面 at sea level: 1000V(volts RMS)	
接触电阻 Contact resistance	内导体 center contact	≤10.0mΩ
	外导体 Outer contact	≤5.0mΩ
绝缘电阻 Insulation resistance	≥1000MΩ	
材料与涂覆 Mechanical Characteristics		
壳体和其他金属零件 Body or other metallic parts	黄铜镀金或镀镍 Brass, gold or nickel plated	
插针 Male center contacts:	黄铜镀金 Brass, gold plated	
插孔 Female center contacts:	铍青铜镀金 Beryllium copper, gold plated	
绝缘体 Insulators:	聚四氟乙烯 PTFE	
压接套 Crimp ferrules:	铜合金镀镍或镀金 Copper alloy, nickel or gold plated	
密封件 Sealing washer	硅橡胶 Silicone rubber	
连接器机械耐久性 Connector durability	500 次 Cycles	

L9(DIN 1.6/5.6) Series

界面尺寸 Interface Mating Dimensions



	PLUG (mm)	
	MIN	MAX
A	-	1.60
B	0.97	1.03
C	4.00	-
D	-	5.60
E	-	5.50
F	-	0.15
G	6.40	6.60

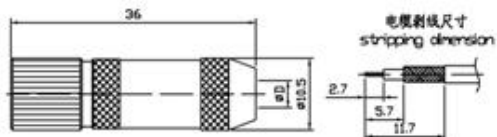
	JACK (mm)	
	MIN	MAX
A	-	1.60
B	-	5.60
C	-	3.80
D	6.60	6.69
E	8.10	8.25
F	-	M9×0.5
G	0.25	-
H	6.70	-
J	2.90	3.10

L9 (DIN 1.6/5.6) Series

电 缆 连 接 器 Connectors for Cables



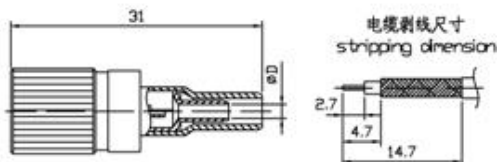
1.6/5.6-75J3



产品型号	电缆型号	D	备注
1.6/5.6-75J2	SFF-75-1	2.6	
1.6/5.6-75J3	SFF-75-1.5-1 SFF-75-1.5-2	3.3	
1.6/5.6-75J4	SFF-75-2 SYV-75-2-1	4.3	
1.6/5.6-75J5	SFF-75-3-1 SYV-75-3	5.3	



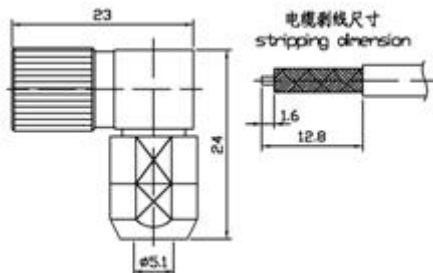
1.6/5.6-75J3Y



产品型号	电缆型号	D	备注
1.6/5.6-75J3Y	SFF-75-1.5-1	1.6	
1.6/5.6-75J12Y	SYV-75-3	3.1	



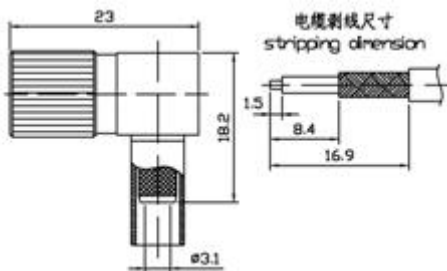
1.6/5.6-75JW12



产品型号	电缆型号	备注
1.6/5.6-75JW12	SYV-75-3	



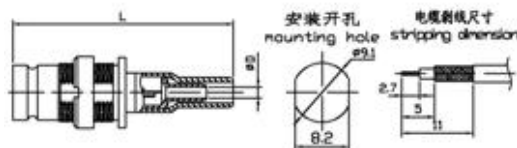
1.6/5.6-75JW12Y



产品型号	电缆型号	备注
1.6/5.6-75JW12Y	SYV-75-3	

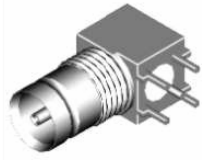


1.6/5.6-75KY3Y

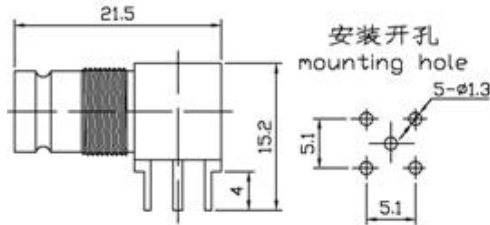


产品型号	电缆型号	L	D	备注
1.6/5.6-75KY3Y	SFF-75-1.5-1 SFF-75-1.5-2	33.8	1.6	
1.6/5.6-75KY4Y	SFF-75-2 SYV-75-2-1	35.3	2.1	
1.6/5.6-75KY5Y	SFF-75-3-1 SYV-75-3	37.3	3.1	

印制板安装连接器
Connectors for PC Board Mounting



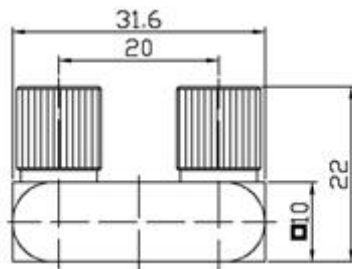
1.6/5.6-75KWHD



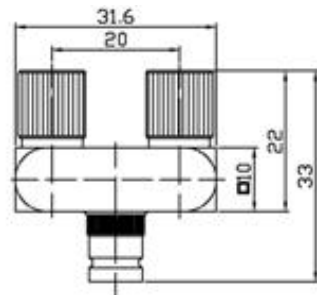
系列内转接器
Within-Series Adapters



1.6/5.6-75JJWW



1.6/5.6-75JKJW



1.6/5.6-75KYK

