

C7D Series

C7D 连接器是推入式射频同轴连接器，特性阻抗为 75 欧姆。供射频回路中连接射频电缆用。可与 SP 系列连接器互换使用。

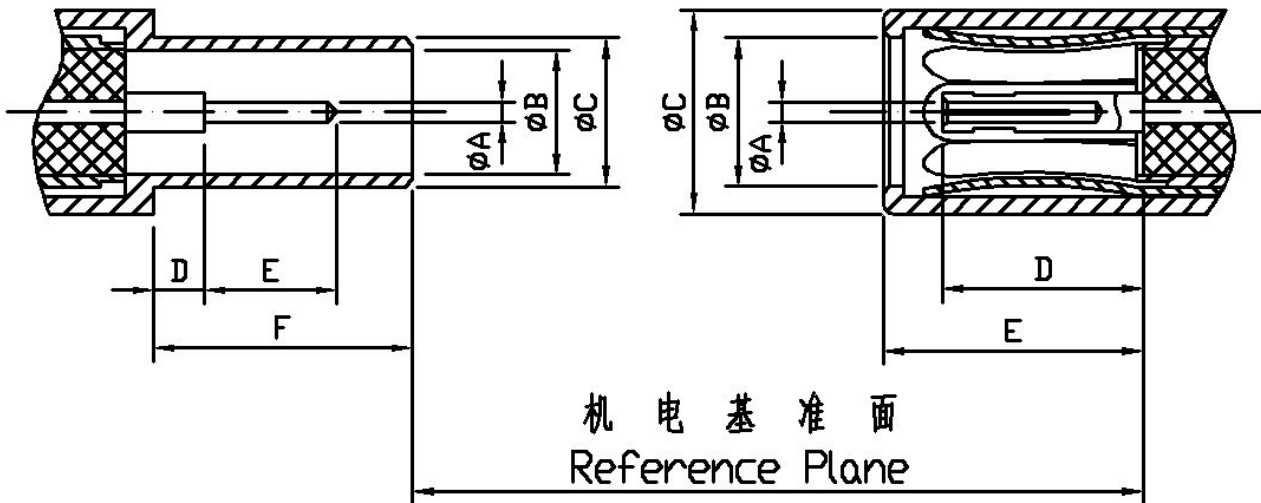
C7D is the push transmutation of RF coaxial connector, Characteristic impedance is 75Ω . It is used for RF circuit connecting RF cables. It can be used interchangeably with the SP connector.



金润信电子科技有限公司

主要技术特性 Technical Characteristics:		
环境温度范围 Temperature range	-55~+125°C	
电气性能 Electrical Characteristics		
特征阻抗 Characteristic impedance	75Ω	
工作电压 Working voltage	500V max(有效值)	
频率范围 Frequency range	0~4GHz	
介质耐压 Dielectric withstanding voltage	海平面 at sea level: 1000V(volts RMS)	
接触电阻 Contact resistance	内导体 center contact	≤5.0mΩ
	外导体 Outer contact	≤5.0mΩ
绝缘电阻 Insulation resistance	≥10000MΩ	
电压驻波比 VSWR	≤1.30	
材料与涂覆 Mechanical Characteristics		
壳体和其他金属零件 Body or other metallic parts	黄铜镀金或镀镍 Brass, gold or nickel plated 不锈钢, 钝化或镀金 stainless, steel passivity or gold plated	
插针 Male center contacts:	黄铜镀金 Brass, gold plated	
插孔 Female center contacts:	铍青铜镀金 Beryllium copper, gold plated	
绝缘体 Insulators:	聚四氟乙烯 PTFE	
密封件 Sealing washer	硅橡胶 Silicone rubber	
连接器机械耐久性 Connector durability	1000 次 Cycles	

界面尺寸 Interface Mating Dimensions



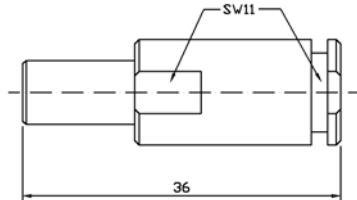
	PLUG (mm)	
	MIN	MAX
A	0.95	0.98
B	6.10	6.15
C	7.21	7.27
D	-	2.50
E	-	6.50
F	-	12.7

	JACK (mm)	
	MIN	MAX
A	1.00	1.06
B	7.30	7.40
C	-	10.00
D		9.80
E		12.70

C7D Series



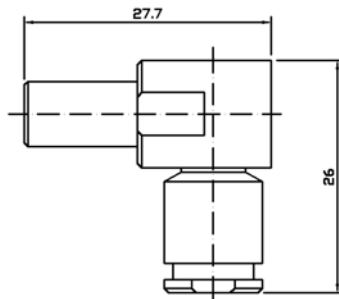
C7D-J12



产品型号	电缆型号	备注
C7D-J12	SYV-75-3	



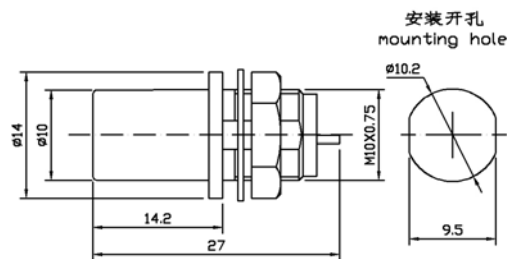
C7D-JW12



产品型号	电缆型号	备注
C7D-JW12	SYV-75-3	



C7D-KY



C7D-KF

